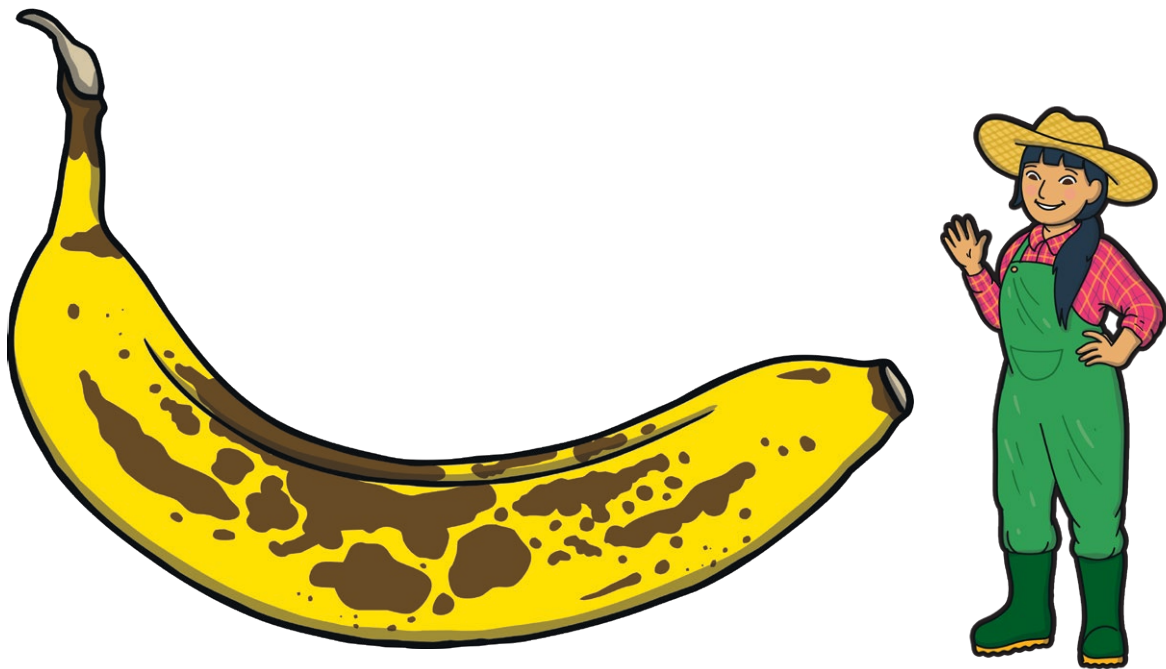


How did this banana grow so huge?



A writing area consisting of a red vertical line on the left side and ten horizontal blue lines for writing.

How did this pirate get stuck on a deserted island?



Two vertical teal bars on the left side of the writing area.

Eight horizontal blue lines for writing, with a vertical red margin line on the left.

Two vertical teal bars on the right side of the writing area.

If you could go anywhere in the world, where would you go and why?



A large rectangular area with a light blue border, containing a vertical red line on the left side and several horizontal blue lines for writing.

If you could have any kind of pet, what would you have and why?



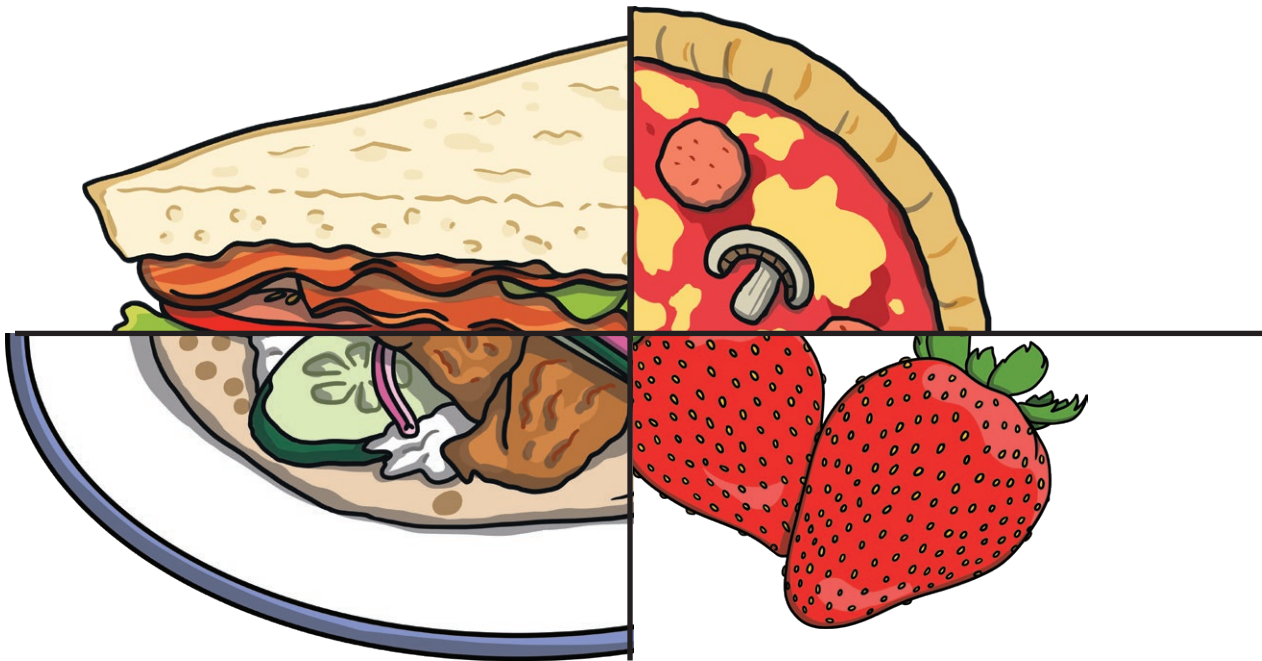
A large writing area with a red vertical margin line on the left and ten horizontal blue lines for writing.

If you could meet anyone, who would it be and why?



A large writing area with a red vertical margin line on the left and ten horizontal blue lines for writing.

If you had to eat one meal for the rest of your life, what would it be and why?



A large writing area with a red vertical margin line on the left and ten horizontal blue lines for writing.

What invention do you think would change the world?

This invention is called...

[Blank box for writing the name of the invention]

[Large blank box for drawing or describing the invention]

[Lined writing area with a red margin line on the left]

What made this dog turn green?



A large rectangular area with a red vertical margin line on the left and several horizontal blue lines for writing.

What would happen if you went to sleep and woke up in a different world?



A large, empty writing area with a red vertical margin line on the left and several horizontal blue lines for writing.

How would you look after a pet dragon?



A dragon should live in...

A dragon eats...

A dragon likes...

What would you do if your favourite toy started talking? What would they say?



Two teal vertical bars on the left side of the writing area.

A large white writing area with a red vertical margin line on the left and several horizontal blue lines for writing.

Two teal vertical bars on the right side of the writing area.

How did this giraffe get on the moon?



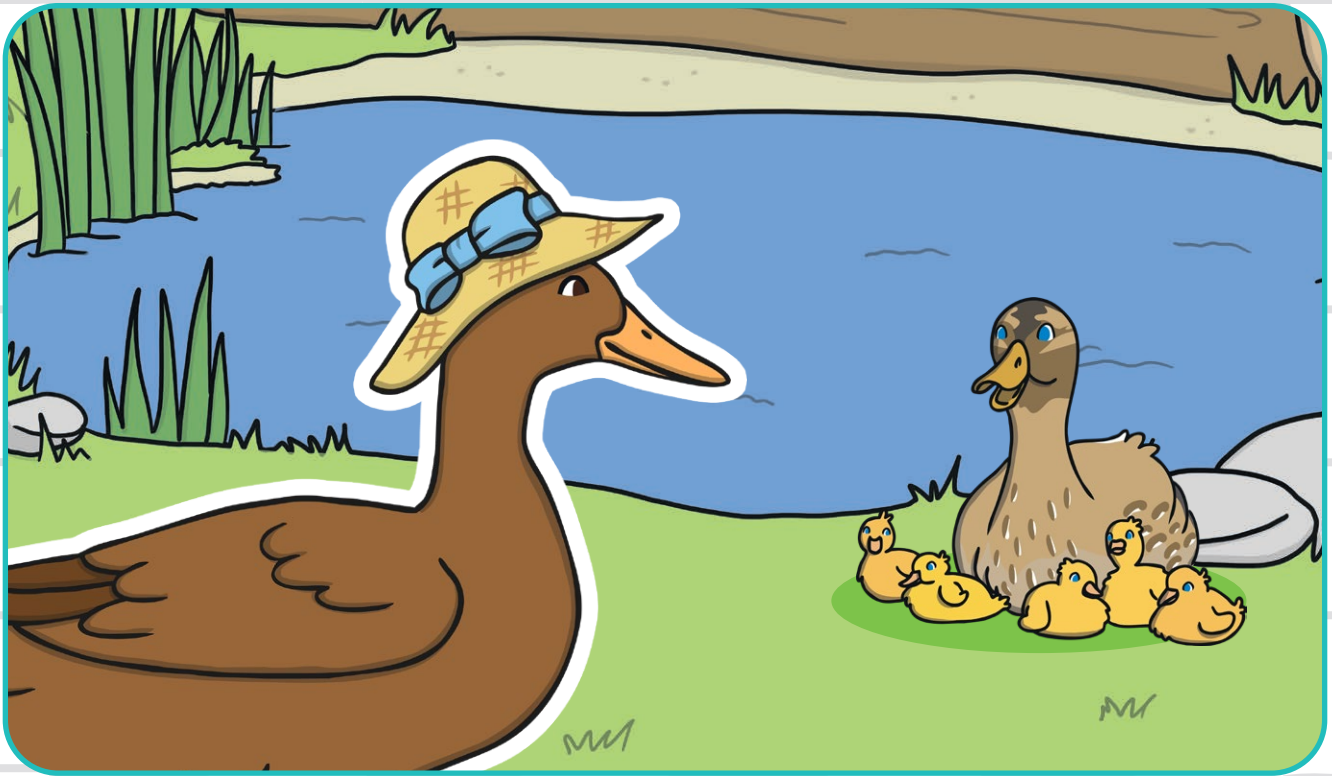
Two teal vertical bars on the left side of the writing area.

Horizontal blue lines for writing.

A vertical red line on the left side of the writing area.

Two teal vertical bars on the right side of the writing area.

Where did the duck get a hat from?



A large rectangular area with a white background and a light blue border. It contains a vertical red line on the left side and several horizontal blue lines for writing.

Where is this train going?



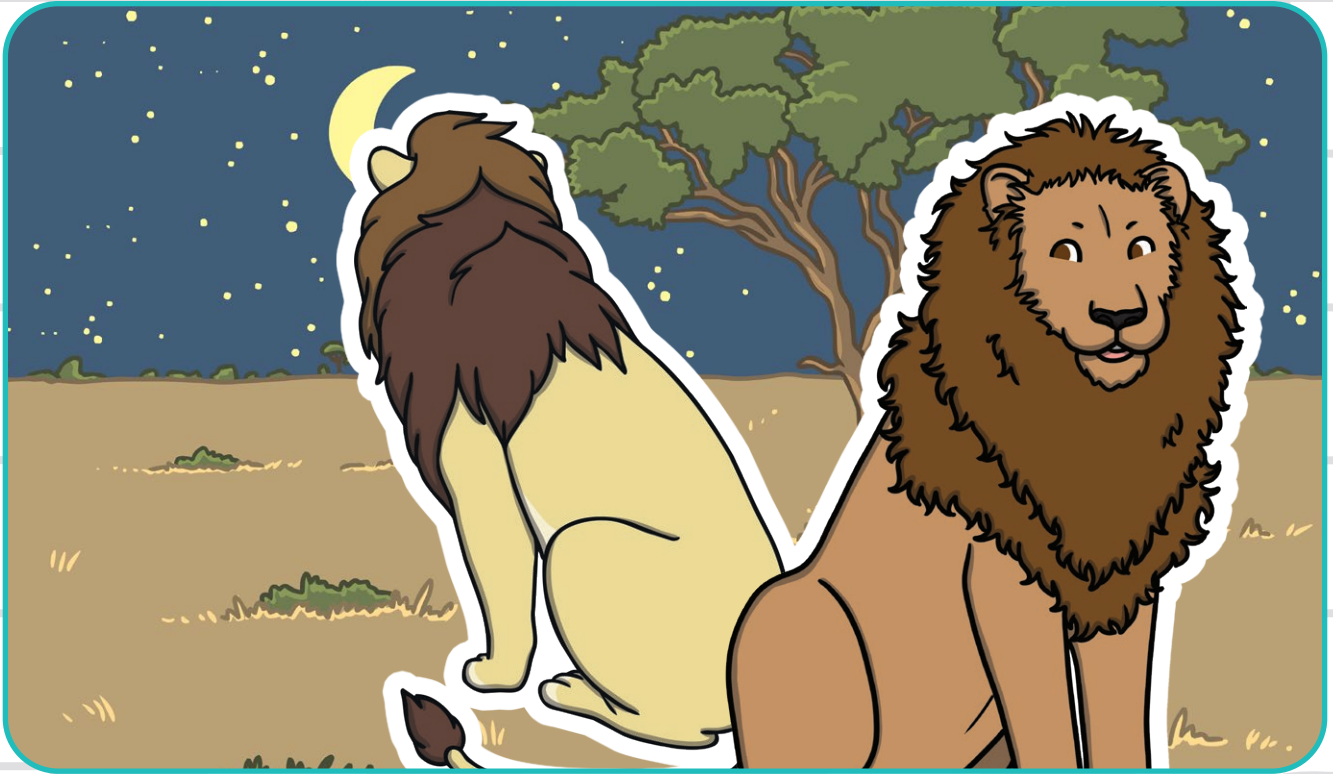
A large rectangular area with a red vertical margin line on the left and several horizontal blue lines for writing.

What has the detective found under the stairs?



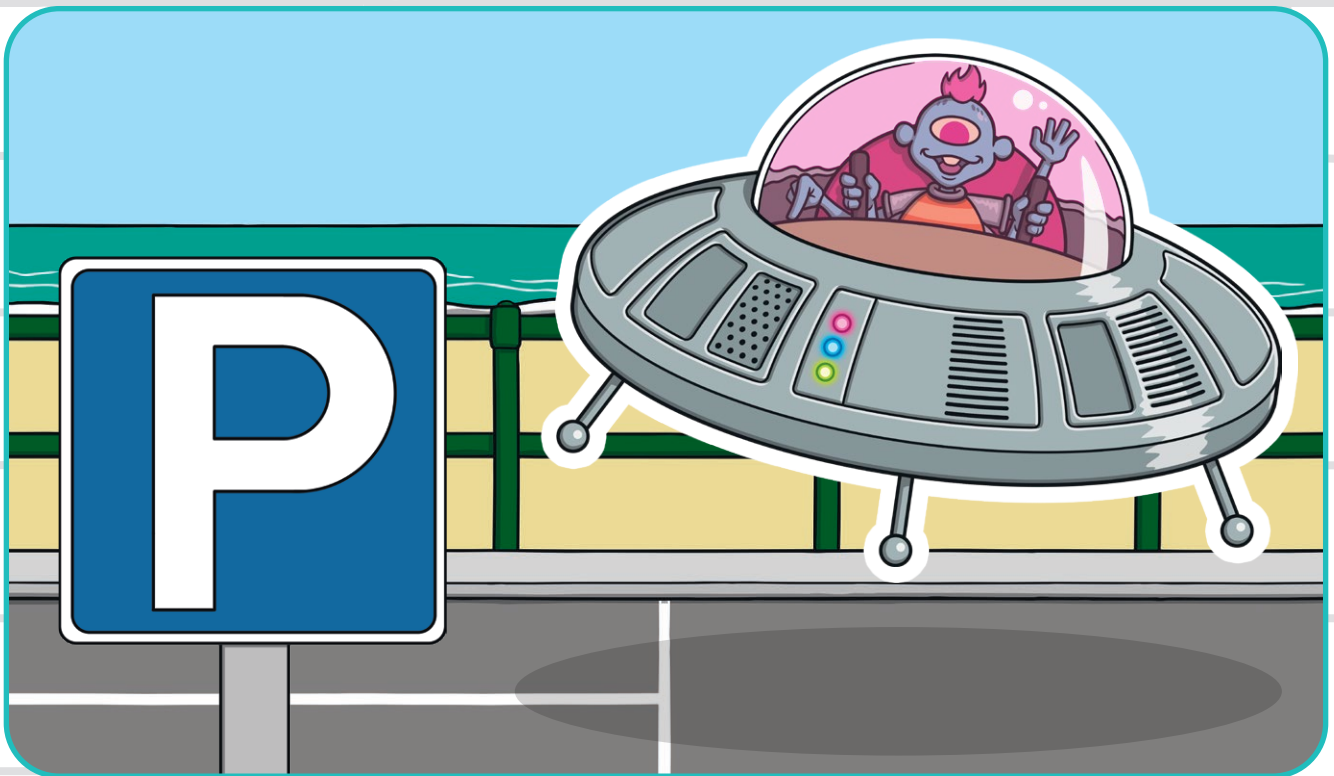
A large rectangular area with a red vertical margin line on the left and several horizontal blue lines for writing.

How did these lions become worst enemies?



A large rectangular area with a light blue border, containing a red vertical margin line on the left and several horizontal blue lines for writing.

Why did this alien come to Earth?



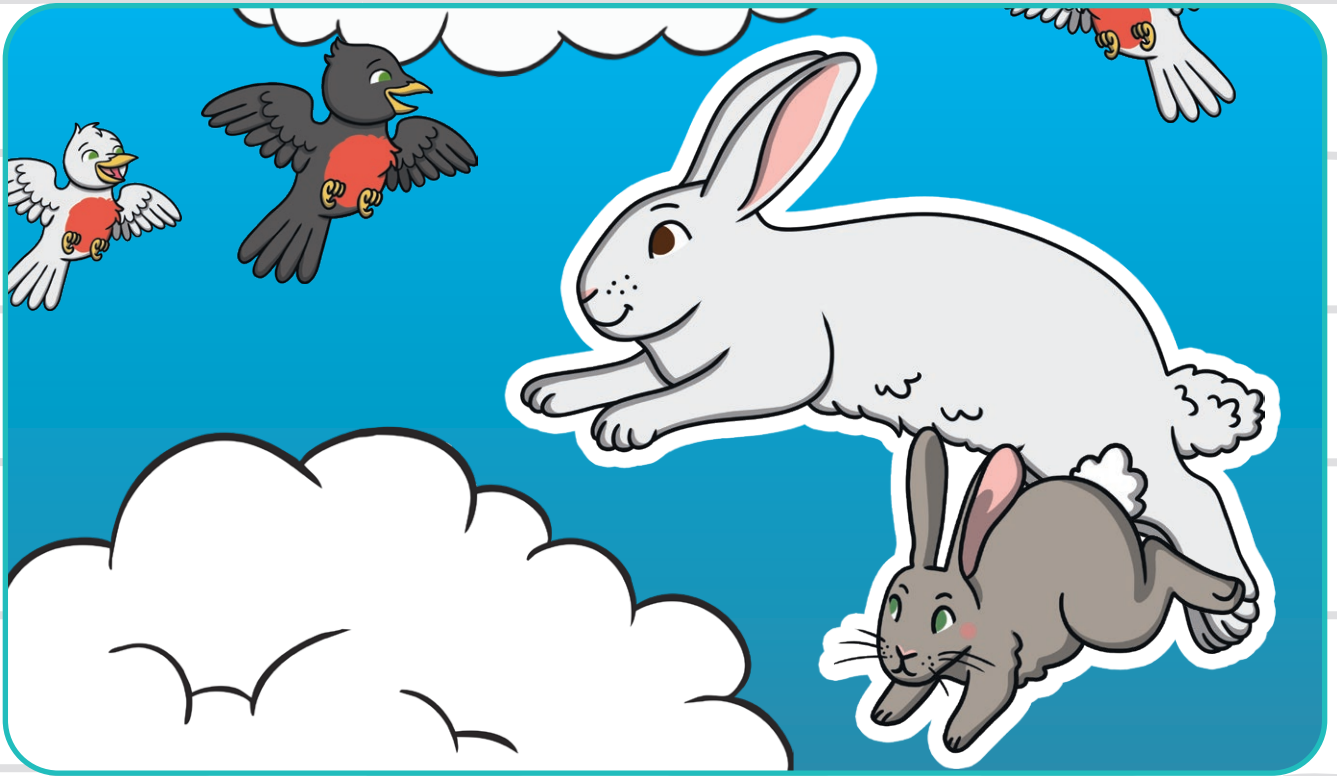
A large rectangular area with a red vertical margin line on the left and several horizontal blue lines for writing.

Where will this bus go next?



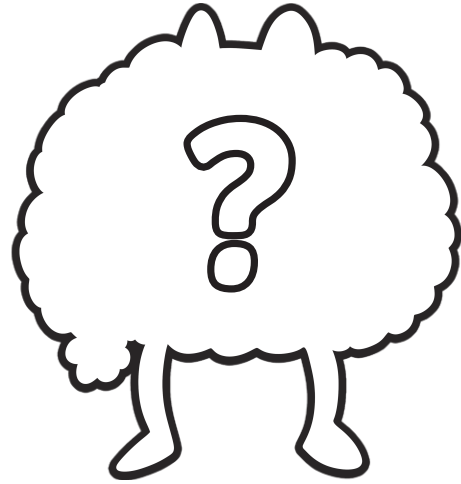
A large rectangular area with a red vertical line on the left side and several horizontal blue lines, intended for writing the answer to the question above.

Why can these rabbits fly?



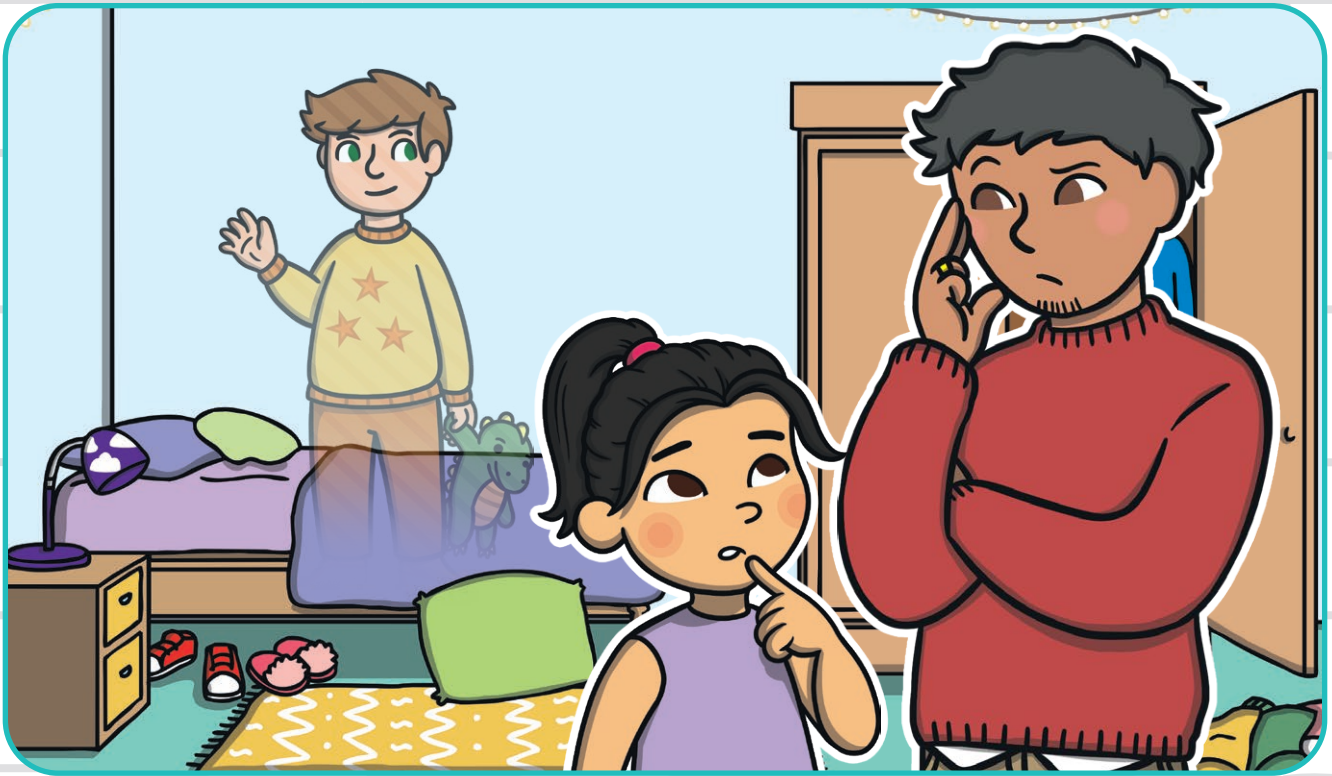
A large writing area with a red vertical margin line on the left and ten horizontal blue lines for writing.

What are the children laughing at?



A large writing area with a red vertical margin line on the left and several horizontal blue lines for writing.

Jake woke up invisible. What did he do next?



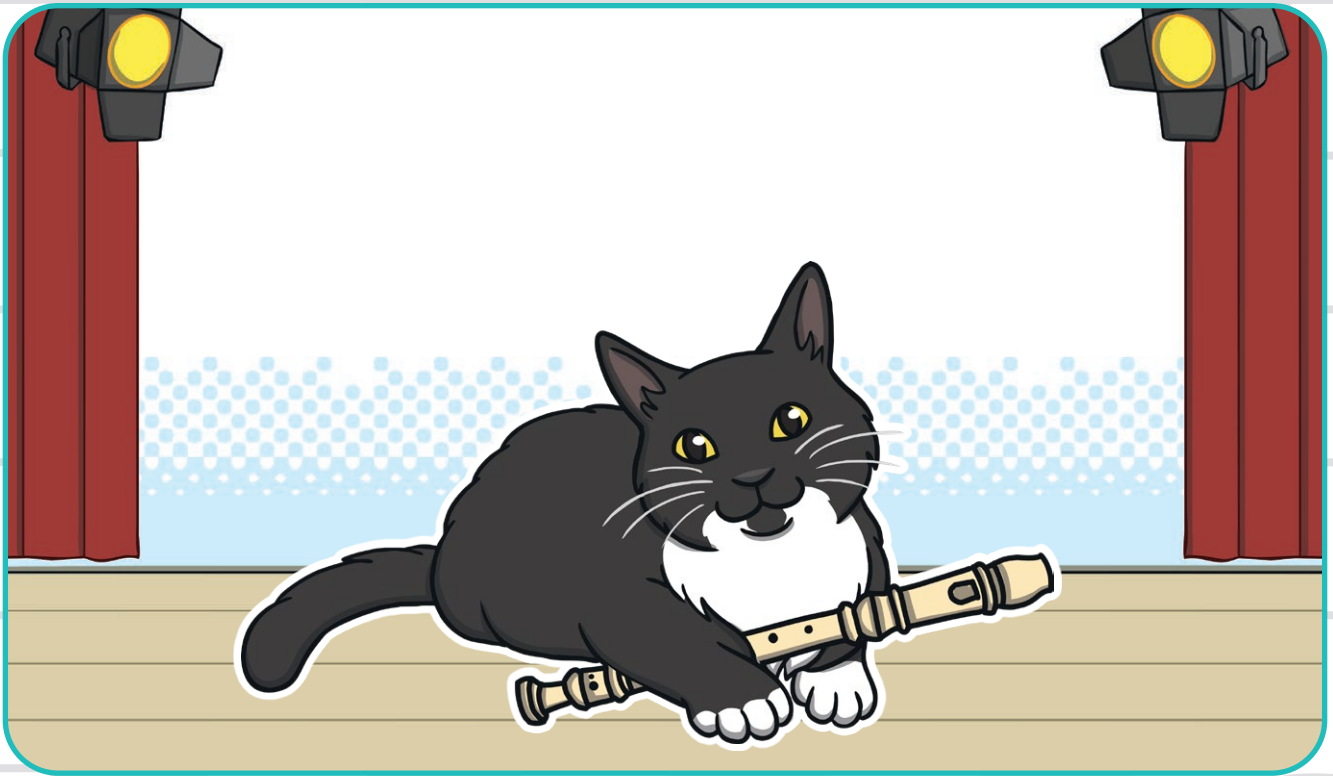
A large rectangular area with a red vertical margin line on the left and several horizontal blue lines for writing.

Lottie woke up with wings. What did she do next?



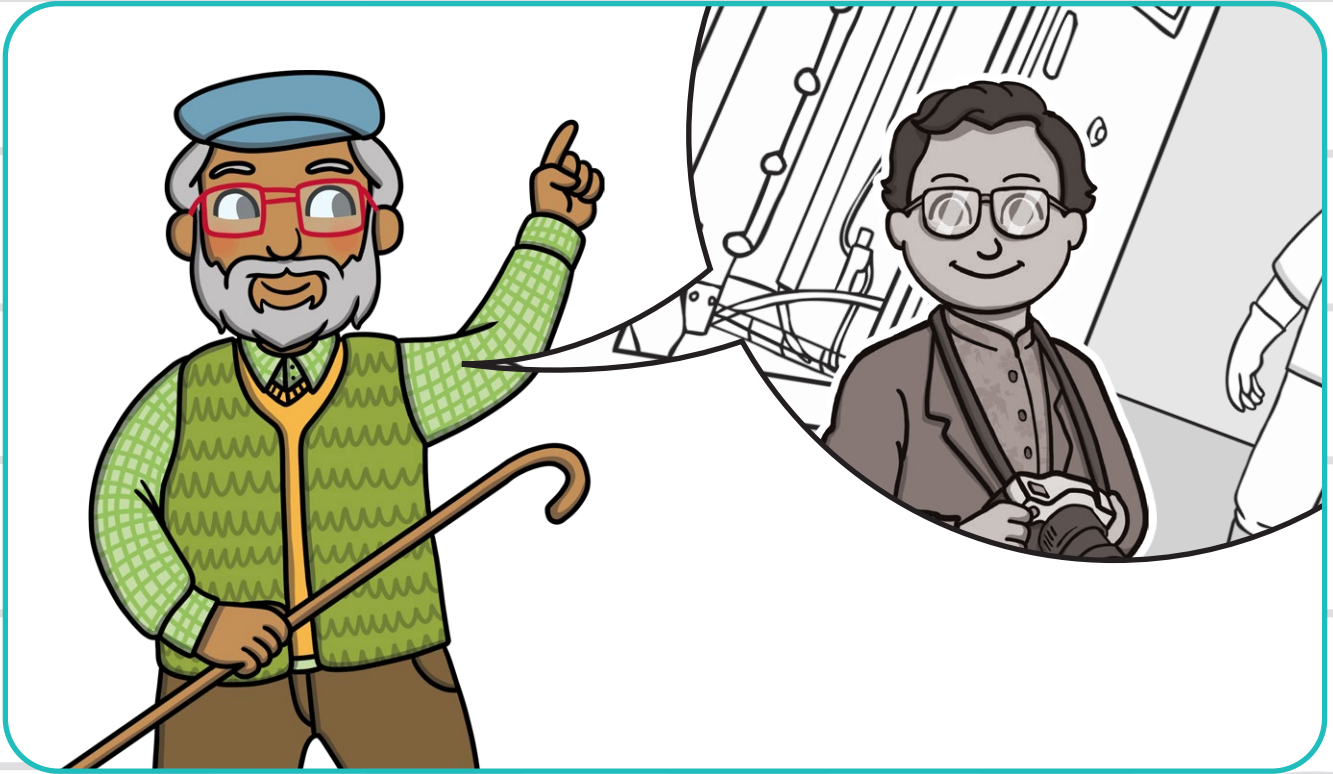
A large rectangular area with a light blue border, containing ten horizontal blue lines for writing. A vertical red line is positioned on the left side, serving as a margin.

My cat is no ordinary pet cat. They can...



A large rectangular area with a red vertical margin line on the left and several horizontal blue lines for writing.

Alex's grandfather has an amazing story of bravery.
What is his story?



A large rectangular area with a light blue border, containing several horizontal blue lines for writing. A vertical red line is positioned on the left side, serving as a margin.

The town is eerily empty.
What has happened to everyone?



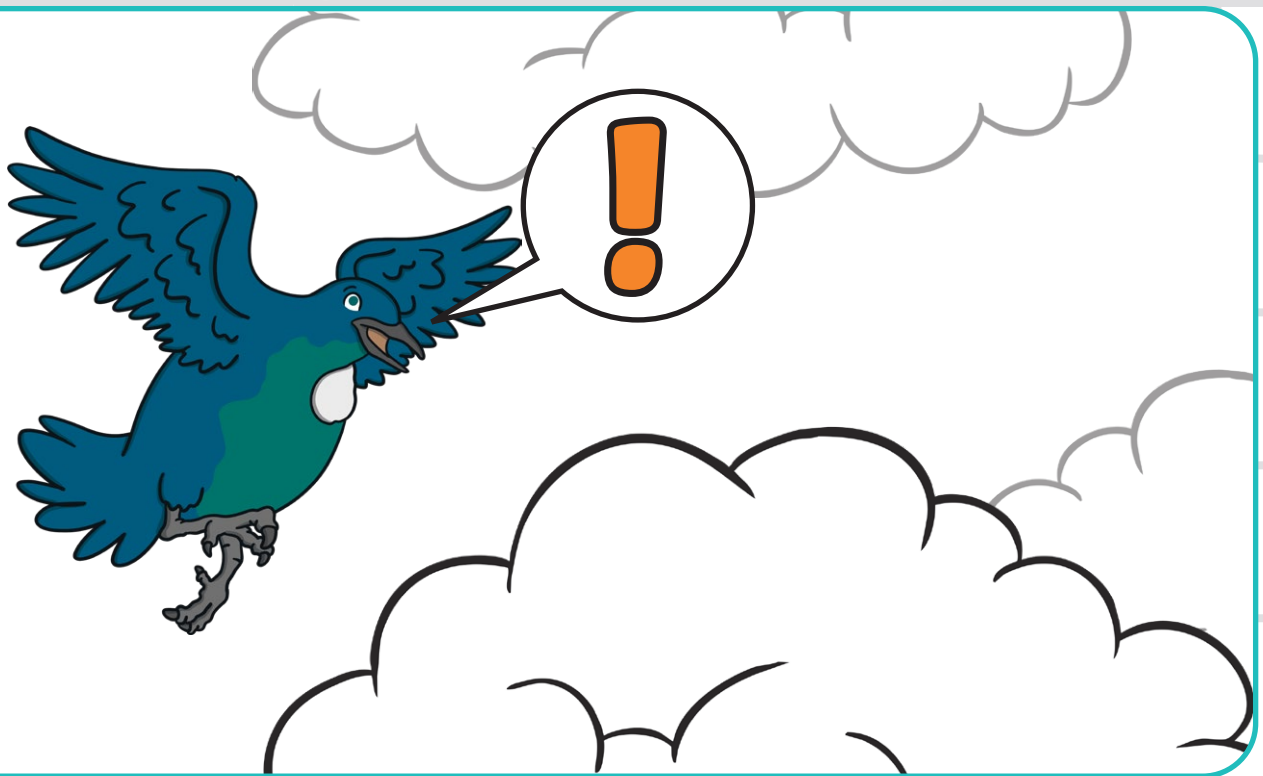
A large rectangular area with a red vertical margin line on the left and several horizontal blue lines for writing.

That seagull stole my ice cream! What do I do?



A large rectangular area with a light blue grid background, intended for writing. It features a vertical red margin line on the left side and several horizontal blue lines for text.

What has this bird seen above the clouds?



A large rectangular area with a light blue border, containing several horizontal blue lines for writing. A vertical red line is positioned on the left side, serving as a margin.

Whose footprint is this? How did it get here?



A large rectangular area with a light blue border, containing a red vertical margin line on the left and several horizontal blue lines for writing.

In Backwards Land, everything is back to front. Write your name backwards and write what you would do here.



My Backwards Land diary, by _____

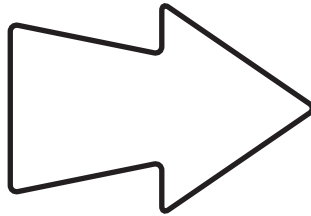
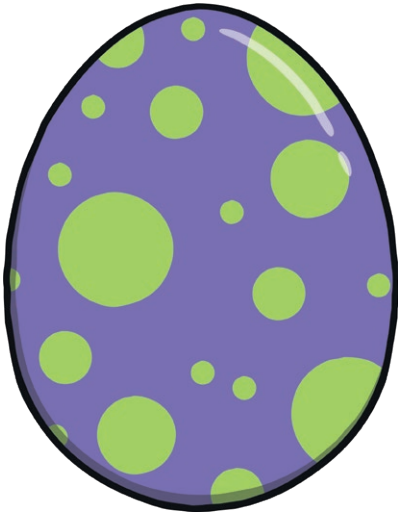
A large writing area with a red vertical margin line on the left and several horizontal blue lines for writing.

These people are cheering for...



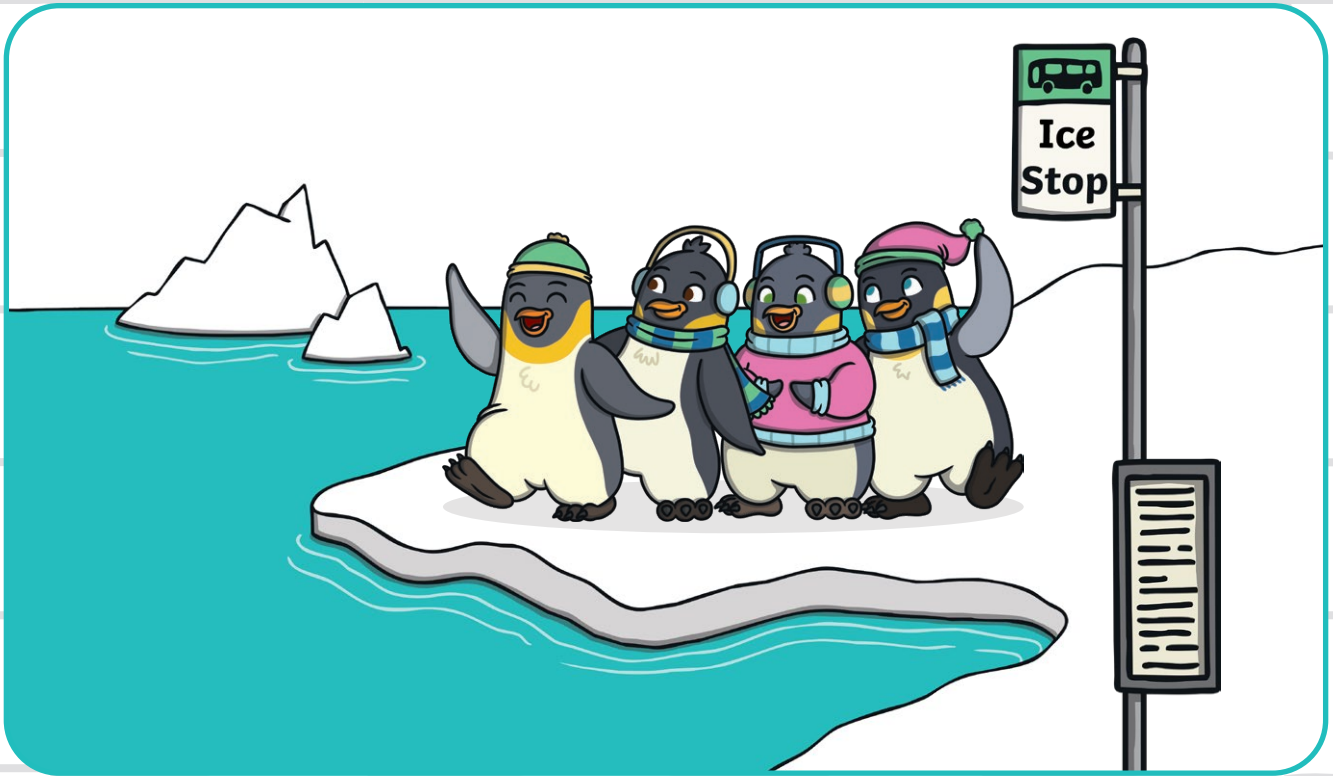
A large rectangular area with a red vertical margin line on the left and ten horizontal blue lines for writing.

What will hatch from this egg? What will it do?



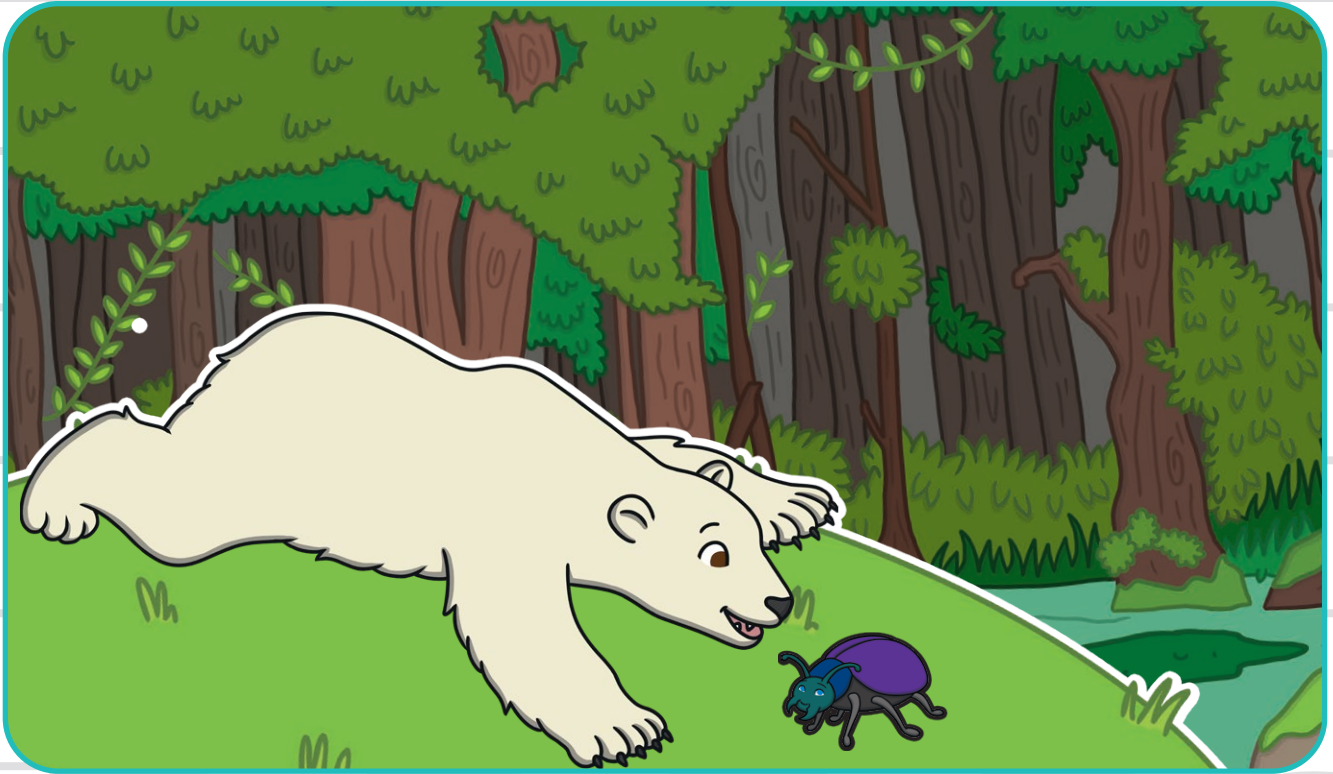
Egg

Why are these penguins dressed up?



A large rectangular area with a red vertical margin line on the left and ten horizontal blue lines for writing.

How did this polar bear get lost?



A large rectangular area with a red vertical line on the left side and several horizontal blue lines, intended for writing an answer to the question above.

Hamza couldn't believe that he won a trophy!
Why did he deserve it?



A large rectangular area with a light blue border, containing several horizontal blue lines for writing. A vertical red line is positioned on the left side, creating a margin.

The whole class was amazed with what Ivy brought in for Show and Tell. It was...



A large rectangular area with a light gray grid background, containing several horizontal blue lines for writing. A vertical red line is positioned on the left side of the area, serving as a margin.

Rashmi found an old bottle washed up on the beach after a storm. There was a note inside it that said...

