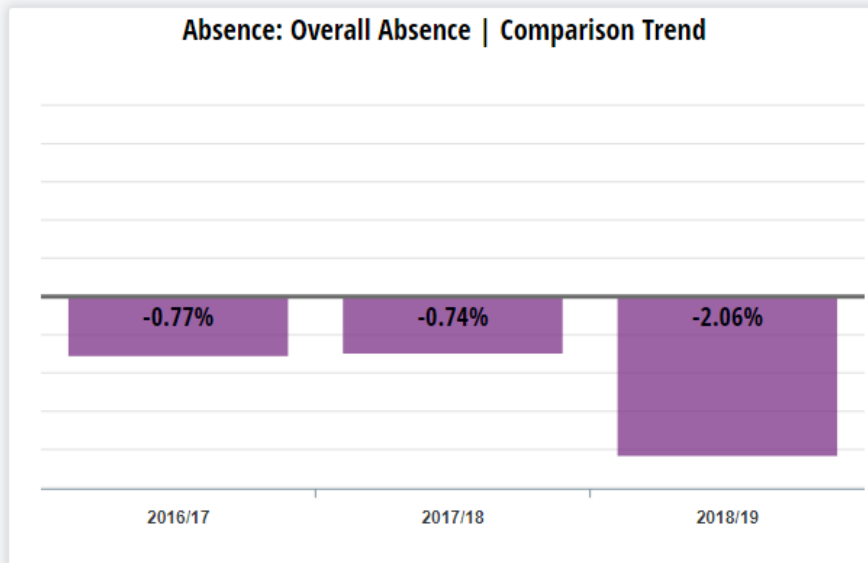
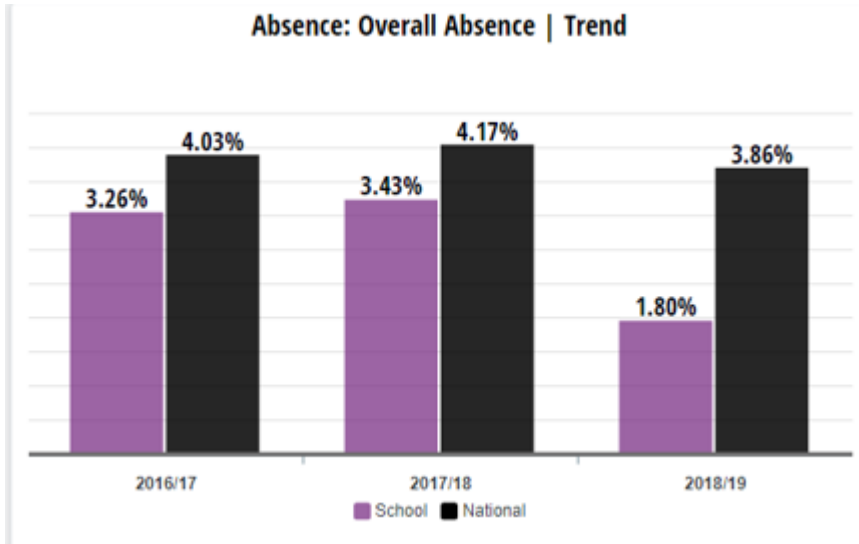


Windlesham Village Infant School Performance Data



Your school's Overall Absence of **1.80%** is **2.06% lower than** the National average of **3.86%**.

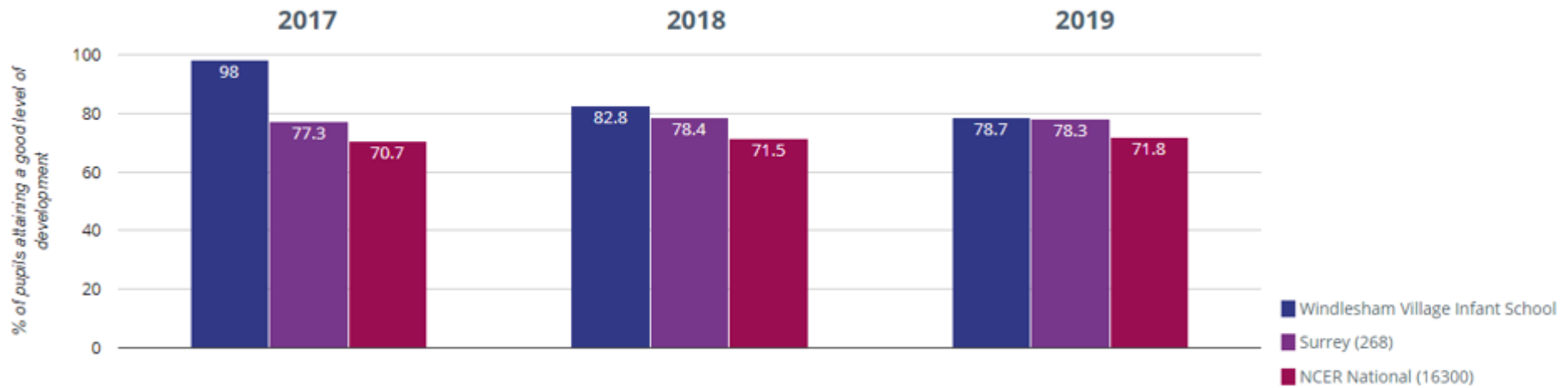
This is equivalent to **205 fewer** missed sessions in your school than the National cohort.

Pupils at your school missed an average of **2.4 sessions**, this is **6.7 fewer** than the National cohort.

Your school has been better than the National average **3 times** in the last 3 academic years for Overall Absence.

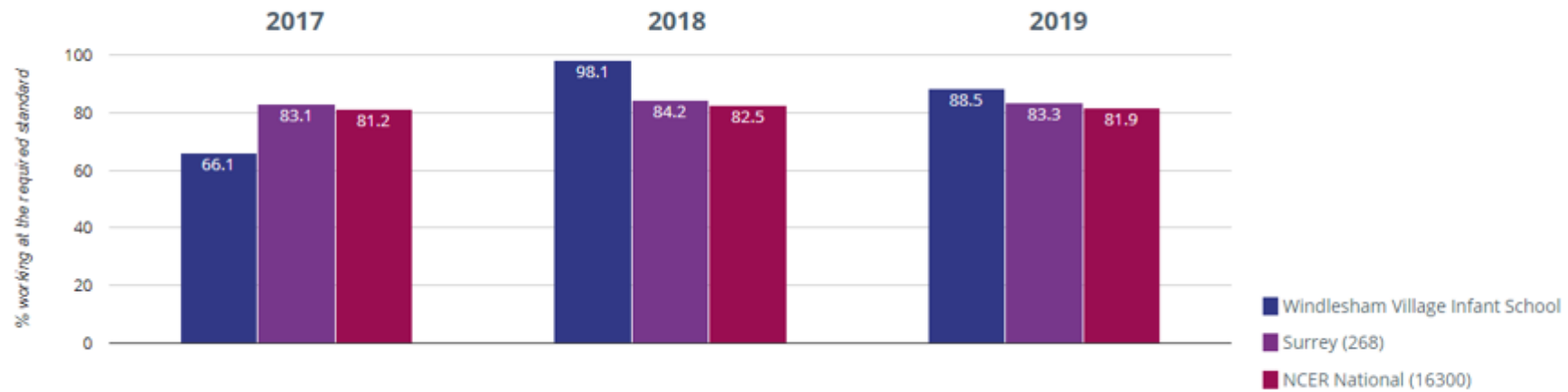
Early Years Foundation Stage Trends: consistently above National/Surrey data. 2017 was a particularly strong year.

★ Good Level Of Development



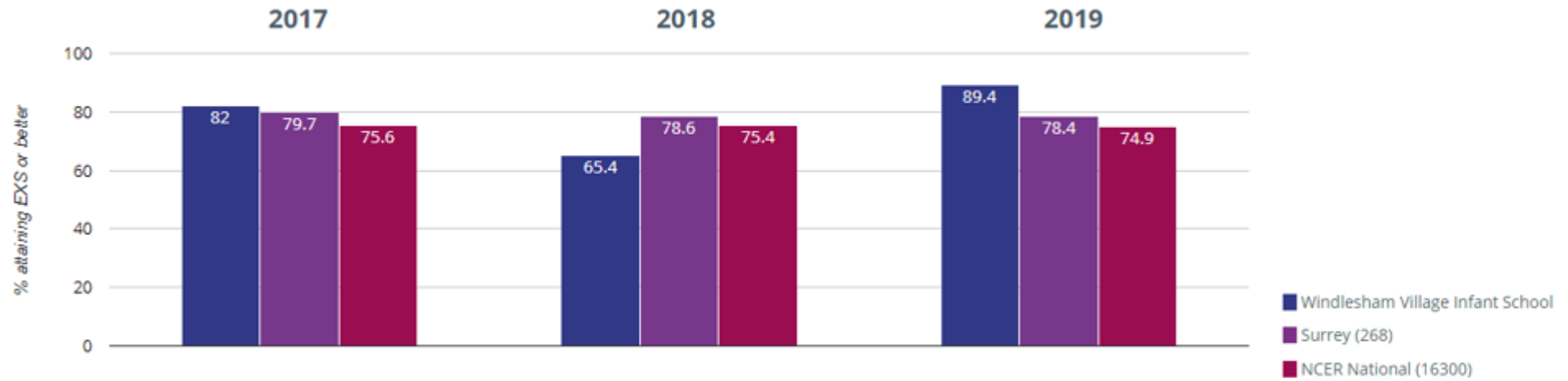
Yr 1 Phonics trend: meeting the expected level

📊 Year 1: Working At

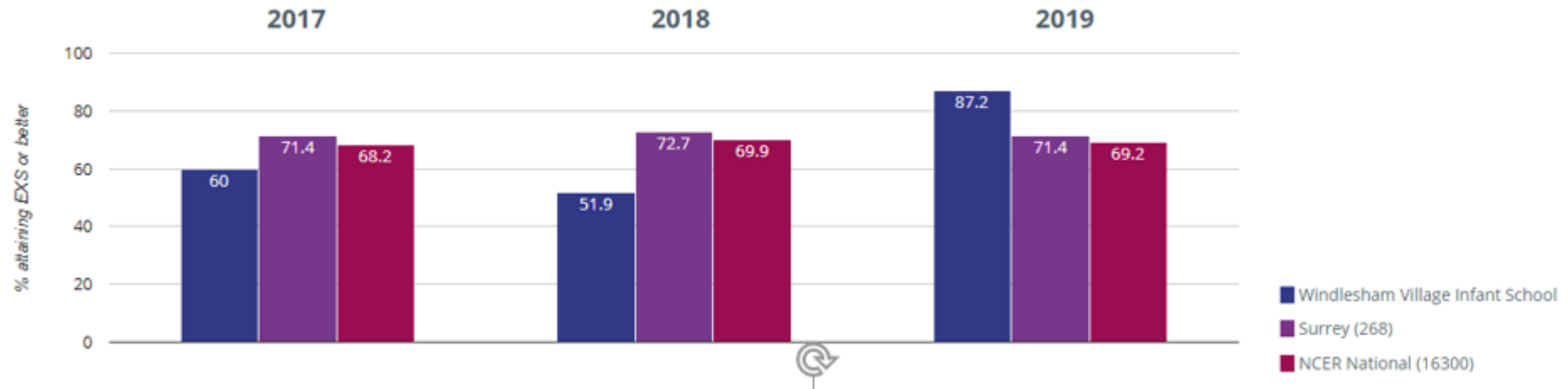


Yr 2 SATs trends: meeting the expected level (EXS)

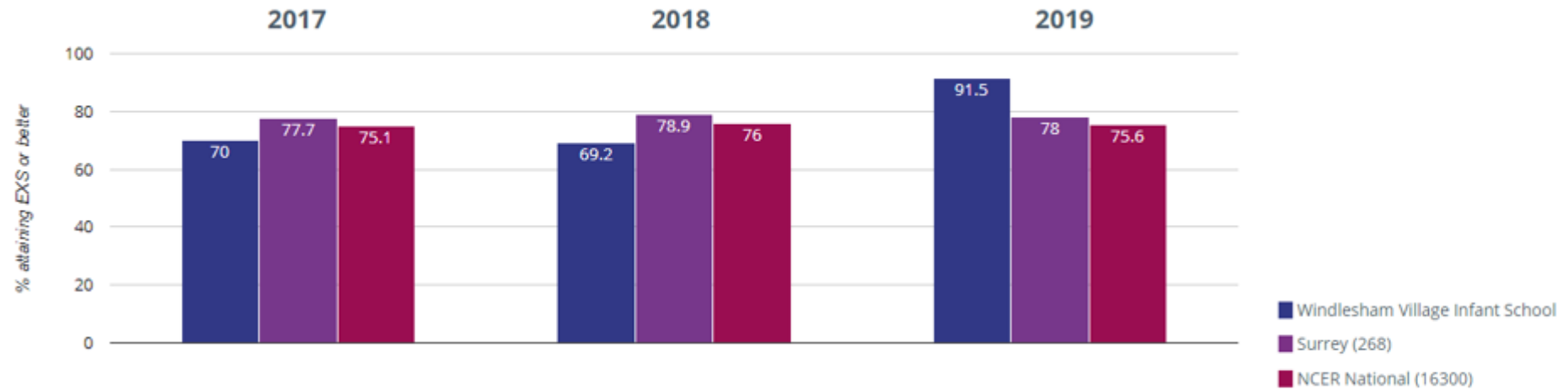
Reading - attaining EXS or better



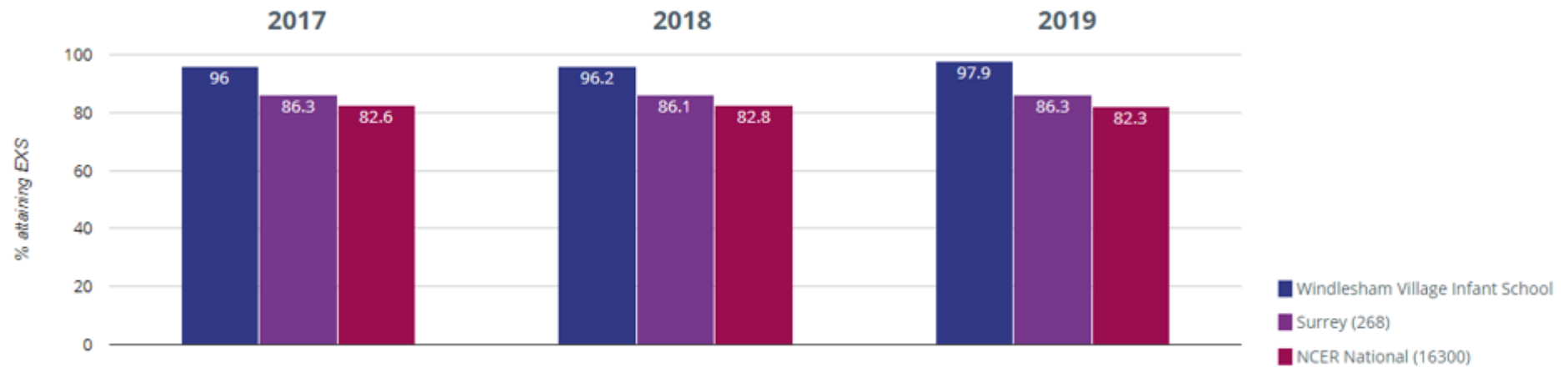
Writing - attaining EXS or better



⊕ Maths - attaining EXS or better



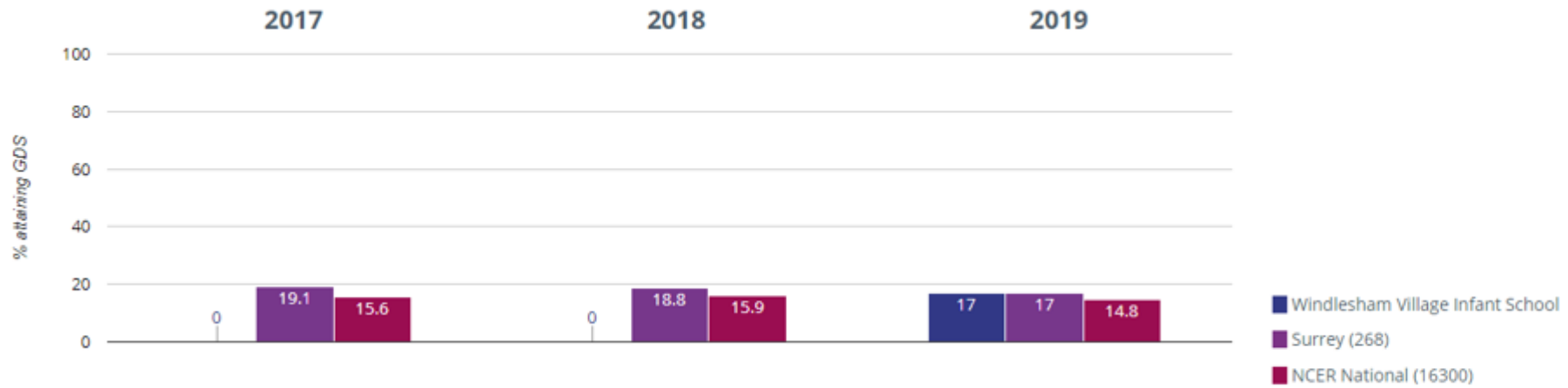
🌿 Science - attaining EXS



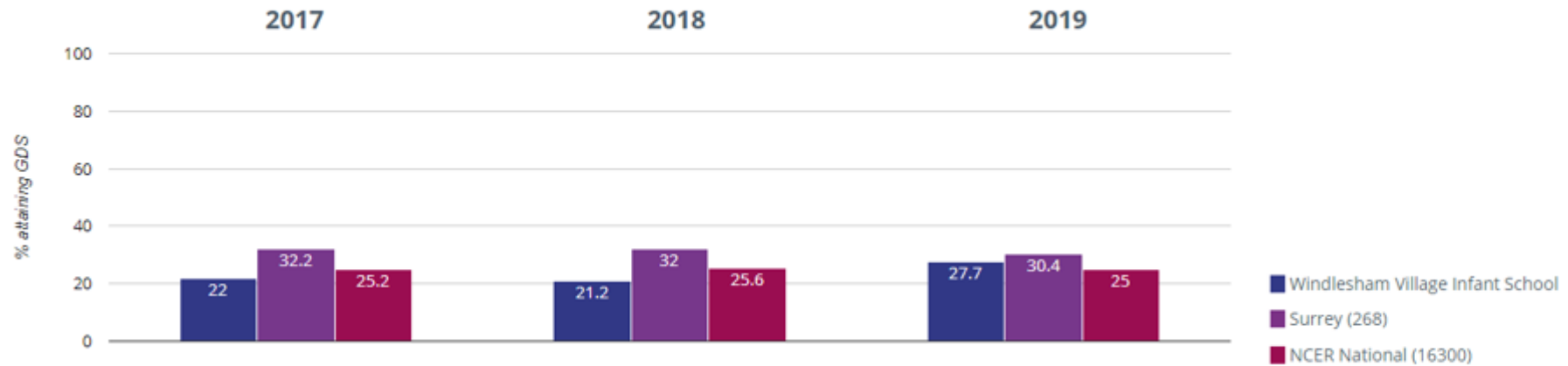
Yr 2 SATs; achieving beyond the expected level to attain Greater Depth (GDS)

This has been an area of focus since 2017.

✎ Writing - attaining GDS



📖 Reading - attaining GDS



⊕ Maths - attaining GDS

